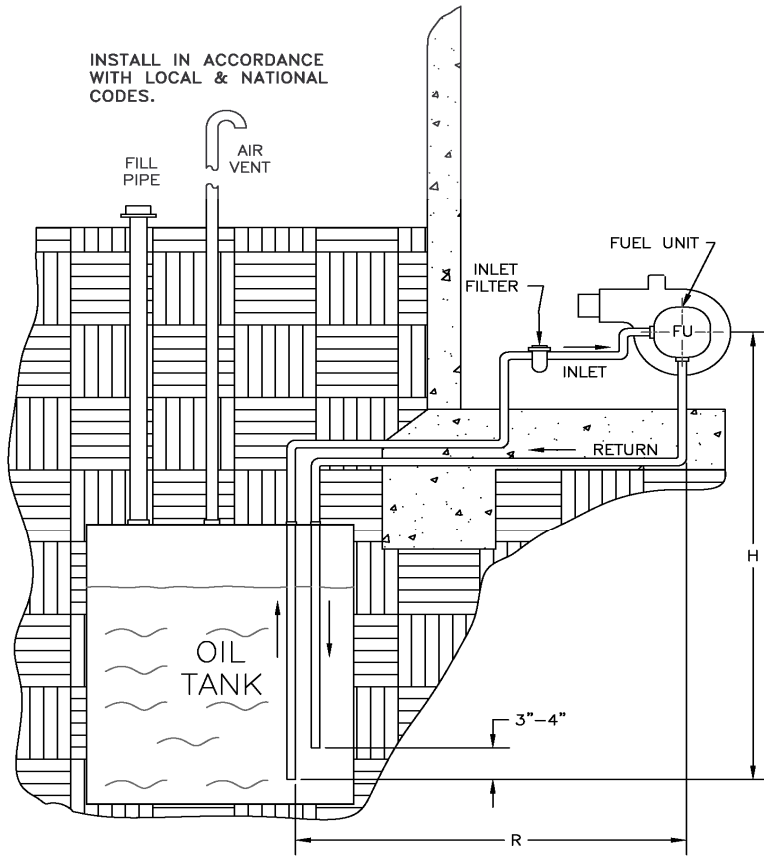


TWO-PIPE HOOK-UP, INSIDE OR OUTSIDE TANK, FUEL UNIT ABOVE TANK

TWO-PIPE LINE LENGTHS (FT)
(max. total line length $L = H + R$)
(calculated for fuel viscosity 57 SSU)

INSTALL IN ACCORDANCE
WITH LOCAL & NATIONAL
CODES.



Inlet Tubing Size	Lift H (FT.)	J4 Models		J6 Models	
		1725 RPM	3450 RPM	1725 RPM	3450 RPM
3/8" O.D. Copper Tubing (try to avoid)	0	57	27	37	18
	2	51	24	33	16
	4	45	21	29	14
	6	38	18	25	12
	8	32	15	20	10
	10	25	12	16	-
12	19	-	-	-	-
1/2" O.D. Copper Tubing	0	100	100	100	70
	2	100	95	100	62
	4	100	83	100	55
	6	100	71	97	47
	8	100	60	81	39
	10	100	48	65	31
	12	75	36	48	23
	14	50	24	32	16
16	25	-	-	-	
5/8" O.D. Copper Tubing	0	100	100	100	100
	2	100	100	100	100
	4	100	100	100	100
	6	100	100	100	100
	8	100	100	100	100
	10	100	100	100	87
	12	100	99	100	65
	14	100	66	90	43
16	70	33	45	22	

Pump ID System:

Example: **J4 P A - B 1000G**

J4 - model size

J4 - see performance data

J6 - see performance data

P - strainer type

P - standard

N - used oil to 1500 cSt *

A - rotation/nozzle location **

A - RH/RH

B - RH/LH

C - LH/LH

D - LH/RH

B - pressure range

A - 20-40 psi

B - 100-200 psi

C - 150-300 psi

D - 40-80 psi

E - 10-20 psi

1000G - series number

1000G - standard series

1050G - spec. features, such as no cutoff

* **NOTE:** See Form 2062 for USED OIL line sizing!

** **NOTE:** rotation (RH = CW) & nozzle location determined by looking at the shaft when unit is oriented with shaft horizontal and decal readable (regulator valve on bottom).

PERFORMANCE DATA

J4 Models		J6 Models	
1725 RPM	3450 RPM	1725 RPM	3450 RPM

Max. #2 Nozzle Flow (GPH):

20 PSI
40 PSI
80 PSI
100 PSI
200 PSI
300 PSI

28	60	42	90
26	58	40	86
24	57	38	85
22	54	36	83
12	44	26	73
2	35	17	63

Power (WATTS):

100 PSI
200 PSI
300 PSI

60	135	95	215
100	215	150	330
140	295	205	445

Inlet Flow, 2-Pipe (GPH):

Max. 2-P Vac. (IN. HG.):

Max. 2-P Lift (FT.):

Max. 1-P Vac. (IN. HG.):

Max. 1-P Lift (FT.):

30	60	45	90
13.5	13.5	13.5	13.5
17	17	17	17
6	6	6	6
8	8	8	8